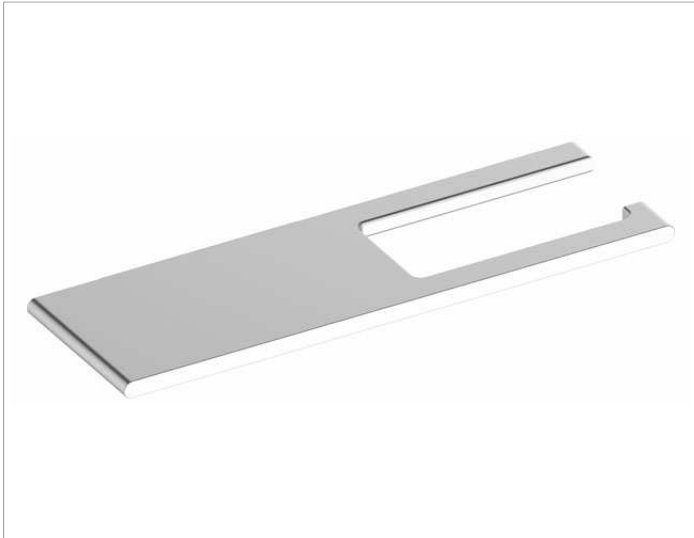


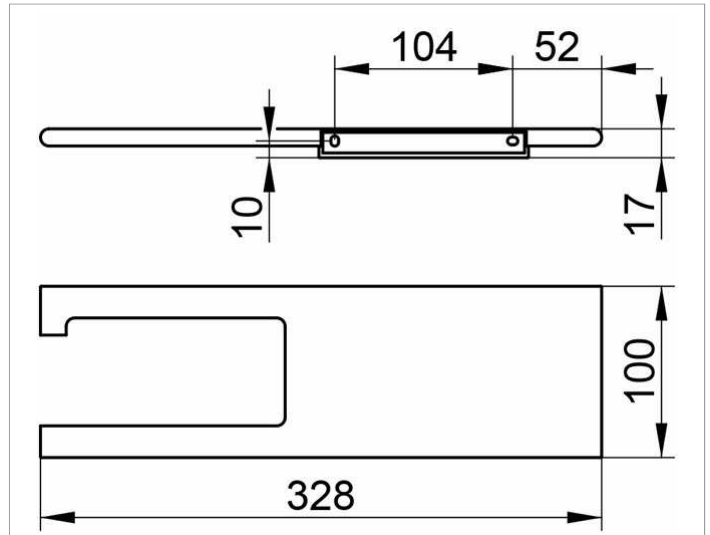
Edition 400

11573170000 Porte-papier

PRODUIT



DESSIN



CARACTÉRISTIQUES DU PRODUIT

avec tablette, ouvert
pour rouleaux d'une largeur de 100/120 mm

SURFACE

aluminium argent anodisé

SPÉCIFICATIONS

KEUCO Edition 400 Toilet Paper Holder With Shelf, 11573170000
Toilet paper holder made of solid aluminum, for roll width 3-15/16" / 4-3/4",
with shelf space, e.g. for mobile phones and accessories,
silver anodized (E6 EV1), wall model, with slightly rounded edges,
width 12-13/16", thickness 3/8", depth 3-15/16", shelf 7-5/16" wide
the toilet paper holder with shelf is concealed,
delivery incl. corrosion-free mounting material